



TECHNICAL DATA SHEET

MAKE-UP SERIES

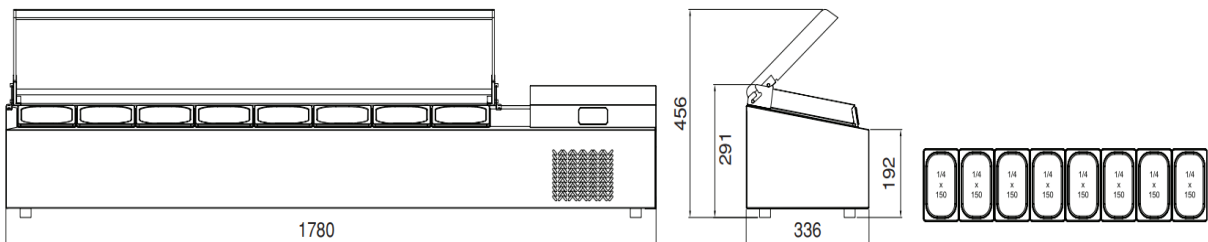
*Visual representation



AIM 250PL
COUNTERTOP SALADBAR W/ PLEXY COVER

- Designed to operate in 43°C ambient %65 humidity
- New design for equal temperature distribution
- Zero ODP Injected 42 kg/m3 Polyurethane Insulation
- Digital controller with easy read screen
- Ergonomic door and handle designed for ease of opening and cleaning
- Icecool refrigeration system designed to be most technologically advanced and energy efficient yet
- Hot gas defrost system
- Waste heat recovery condensate vaporiser system
- All refrigerators can be produced in marine version

*Visual representation



MAKE-UP SERIES AIM 250PL





TECHNICAL DATA SHEET

GENERAL INFORMATION

Operating Temperature: -2/+8 °C
Climate class: 5
Capacity: GN 1/4-150 12 pieces
Overall dimensions: 2500x340x300

CABINET CONSTRUCTION

Exterior Material: AISI 304 Stainless Steel
Back Material: Galvanized steel
Interior Material: AISI 304 Stainless Steel
Drain: ✓
LED lighting eclairage LED: X
Insulation: Polyurethane with high density
40kg/m³, CFCs free, zero ODP and low GWP
Insulation thickness(mm): 50
Blowing Agent: HFO

REFRIGERATION

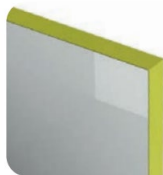
Thermostat: Touch screen- IP65
Refrigeration system: Split system
Defrost: Resistance
Expansion Device: Capillary
Fans: ✓
Condensation: Forced air
Evaporation: With fan
Condensate pan: Hot gas condensation pan

TECHNICAL FEATURES

Gas Refrigerant: R134A
Power Supply: 230V / 1 / 50 Hz

CRATING

Crated dimensions L x l x H (mm): 2500x350x310
Net Weight (kg): 55
Crated Weight (kg): 57



SAVING ENERGY

Eco friendly, HFC – free polyurethane insulation providing low energy consumption



CLASSIC



AIMCLEAR

NEW CONDENSER SYSTEM

Stayclear condenser



CLASSIC



AIM EVA

EVAPARATOR DOES NOT SNOW THROUGH HOT GAS DEFROST



MAKE-UP SERIES AIM 250PL



AIM INDUSTRIAL KITCHEN EQUIPMENT
DAP VALLEY S BUILDING NO:10 KAGITHANE / ISTANBUL

